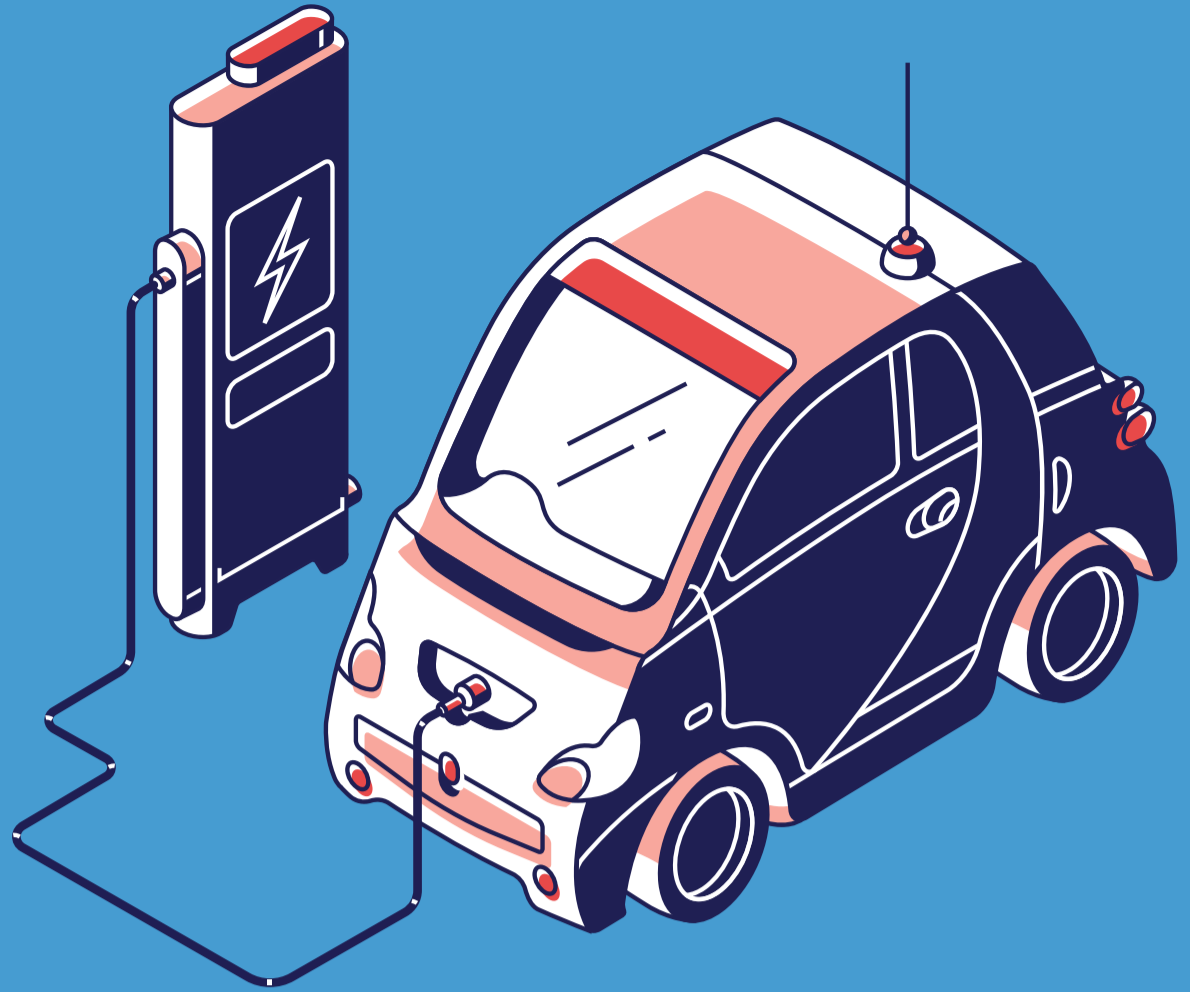


HOW TO DRIVE AN ELECTRIC CAR EFFICIENTLY



Electric cars can perform very impressively. Still, driving an electric car efficiently can be a daunting task if you are not sure what you are doing. Since electric cars are a clean alternative to gas-powered cars, many people are trying to get the most out of the technology. Therefore, they are trying to learn how to drive their cars properly.

What Is the Most Efficient Speed to Drive an Electric Car?

One aspect of efficiently driving a gas-powered car that can be used with an electric car is speed. Most people know that when they drive a gas-powered car, the faster they drive the more gas they will use up. Consider these points when it comes to an electric car's speed.

- Electric cars are more efficient when driven slowly.
- Fast speeds put undue stress on the battery.
- Constantly going fast then slow will diminish the performance of the battery.



1 Properly Inflate the Tires

Improperly inflated tires can impact the efficiency of an electric vehicle. This is why it is important to check them periodically and add air when necessary. You should use a tire pressure gauge to check the psi in your tires to make sure that they are in the range recommended by the manufacturer.

1



2 Avoid Using the Climate Control

It is tempting to want to blast the heat on a cold day, but the heating system in an electric car uses a lot of energy that could be used elsewhere in the vehicle. Remember, everything in the vehicle, including how it drives, is connected to the battery system. In a gas-powered car, the battery is not taxed with the duties of the engine.

2



3 Properly Charge the Battery

It is important to know that electric car batteries will not allow you to fully charge them, nor will they ever go completely empty. Despite this, you can still find yourself stranded with a "dead" battery if you do not charge properly.

3

4 Plan Your Route

How you get to your location is an important factor that goes into the range of your electric vehicle. So, before you hop on the highway to get to your next destination, you should carefully consider if that is the right option for your car.

4

5 Use Regenerative Braking Whenever Possible

Regenerative braking helps conserve energy in electric cars by converting the energy created when braking into energy that can be transferred to the battery of the car, thereby charging it.

5

6 Minimize Additional Weight

If you want to drive efficiently, you need to monitor the extra weight you are storing in the vehicle. Unnecessary weight can cause the car's range to decrease, which will cause the car to not be efficient the way it could be.

6

